

# GLISSANDO 20SL

## DIGITAL PATHOLOGY SCANNER FOR 20 SLIDES



### GLISSANDO 20SL MEDIUM-CAPACITY SLIDE SCANNER WITH EXCEPTIONAL IMAGE QUALITY AND PERFORMANCE

The Glissando 20SL combines the best-in-class brightfield scanning speed and exceptional image quality of Objective Imaging's standard Glissando scanner with a 20-slide auto-loader, all within a compact footprint that easily fits into any situation.

The multiple holder design offers confident, safe operation by avoiding any direct internal handling of glass, while the proven Glissando scanning engine ensures maximum image fidelity and flexible scan output formats.

The scan preview workflow enables handling of even the most difficult specimens with a quick review before beginning walk-away scanning of the slide batch.

#### KEY FEATURES

- ◆ Capacity for 20 standard or 10 mega slides
- ◆ Mix standard and mega slides in one batch
- ◆ Scan preview wizard for region confirmation
- ◆ Brightfield 2D scanning as well as multiple Z-stack scanning modes
- ◆ Flexible scan output formats for maximum results compatibility
- ◆ Modular upgrade path from standard Glissando to Glissando 20SL

**FOR RESEARCH USE ONLY. NOT FOR USE IN DIAGNOSTIC PROCEDURES.**

# GLISSANDO 20SL

## SLIDE SCANNER



### SPECIFICATIONS

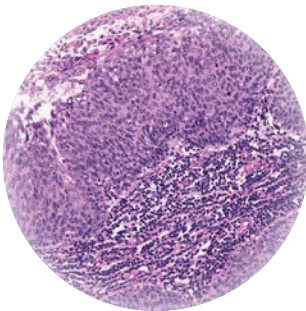
<b>Capacity</b>	20 standard 75x25mm slides or 10 double-width 75x50mm mega slides
<b>Mixed slide sizes</b>	Yes, combine standard slides with mega slides in one batch
<b>Objective lens</b>	Single scanning objective lens, either 40X/0.75 -OR- 20X/0.75
<b>Scan image resolution</b>	0.275 µm/pixel (with 40X lens) -OR- 0.55 µm/pixel (with 20X lens)
<b>Barcode reader</b>	Image-based 1D and 2D (Datamatrix, QR Code)
<b>Z-stack scanning</b>	Yes, with 3D and extended focus modes
<b>Scan output formats</b>	SWS, SVS, SZI, TIFF/BigTIFF with user-configurable compression
<b>Control computer</b>	Internal mini-PC with Ethernet connection and touchscreen monitor
<b>On-board storage</b>	500 GB solid state drive
<b>Physical dimensions</b>	325mm (W) x 325mm (H) x 559mm (D)
<b>Electrical</b>	Universal AC input, 50/60 Hz
<b>Certifications</b>	IEC 61010-1:2010 (Third Edition), EN61326-1:2013, EN61000-3-2:2014, EN61000-3-3:2014, CFR47 (Part 15):2019

### THE OBJECTIVE IMAGING DIGITAL PATHOLOGY FAMILY

#### GLISSANDO



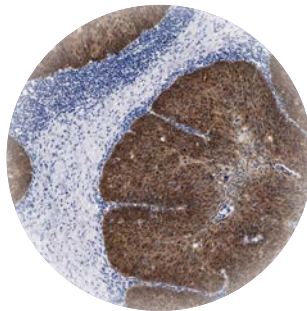
Compact, high quality scanner with a capacity for 2 slides.



#### GLISSANDO 20SL



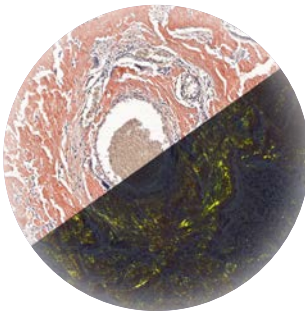
Auto-loading 20-slide scanner for medium capacity scenarios.



#### GLISSANDO POL



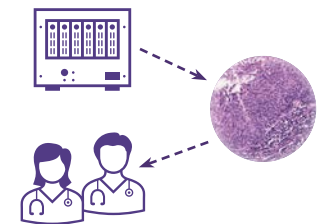
Scanning in both brightfield and polarised light.



#### GLISSANDO IMAGE SHARE



Stand-alone whole slide image archiving and sharing workstation.



**Objective Imaging Ltd.**  
Unit 1, Quay Court, Colliers Lane, Stow cum Quy  
Cambridge, CB25 9AU  
United Kingdom



+44 1223 813777



sales@objectiveimaging.com



www.objectiveimaging.com



FM631706